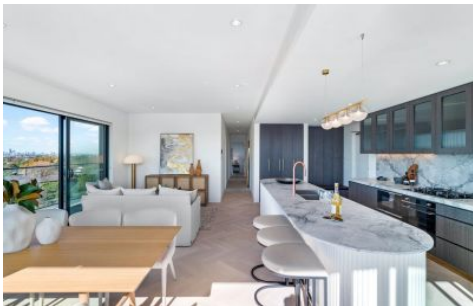


ELLA ELIAS

PROPERTY GROUP



602/312 Victoria Road Gladesville NSW

3 2 2

Positioned in one of Sydney's most sought-after suburbs, this stunning penthouse offers an exceptional lifestyle combining space, style and convenience. Located just 12km from the CBD, you will enjoy easy access to major hubs, transport, and a vibrant selection of local cafés and dining options.

This unique residence showcases a sophisticated design with generous proportions and an abundance of natural light throughout. Perfectly suited for those seeking comfort and elevated living, this home delivers both practicality and luxury in equal measure.

Property Features:

[For full version visit the website](#)

Type : Unit

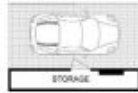
View : <https://www.eliasproperty.com.au/lease/nsw/northern-suburbs/gladesville/residential/unit/8690271>



Nadim Wehbe
0425 339 166



Trish Bowen
02 9807 3688



312
VISTA VICTORIA
BLADESVILLE



APARTMENT NUMBER
E-602

TOTAL AREA
167m²

| INTERNAL | EXTERNAL |
|------------------|------------------|
| 95m ² | 69m ² |

| CARSPACE | STORAGE |
|------------------|-----------------|
| 28m ² | 3m ² |

| Garage | Storage | Carport | Shed |
|--------|---------|---------|------|
| 3 | 2 | 2 | 1 |

www.buildex.com.au



Disclaimer: Available floorplans, advertising, brochures, images and images are intended as a guide only. All of the floorplans, images and the associated data and/or other information is subject to change without notice.