



## 54 Pittwater Road Gladesville NSW

5 3 2

5 Bedrooms 3.5 Bathrooms 2 Cars

Designed for space, flow and effortless entertaining, this contemporary home delivers refined, low-maintenance living with generous proportions and seamless indoor-outdoor connection, ideal for modern families.

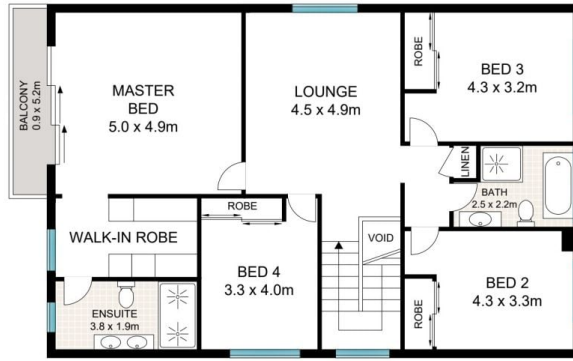
- ? 3 distinct living spaces offering flexibility and entertaining
- ? Expansive open-plan living and dining anchored by a statement stone island kitchen equipped with high-end appliances
- ? Butler's Pantry/Kitchenette with additional cooktop and dishwasher
- ? 5 bedrooms, all with built in wardrobes

[For full version visit the website](https://www.eliasproperty.com.au)

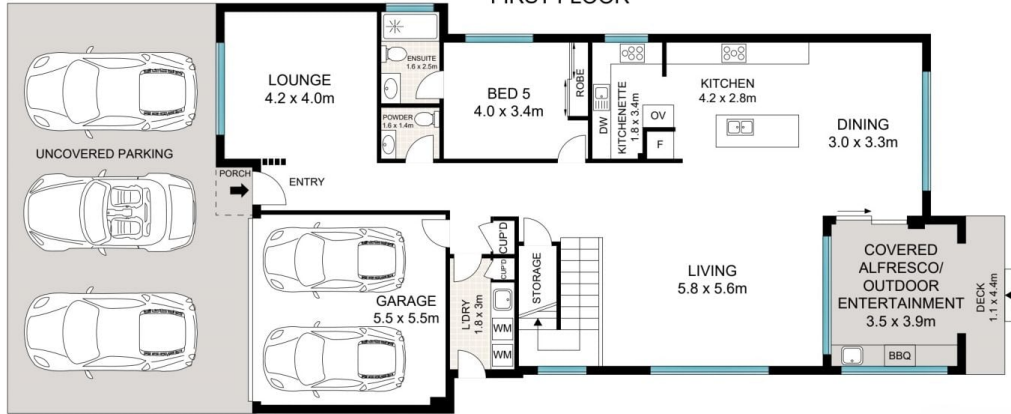
**Type** : House  
**Land Size** : 632 sqm  
**View** : <https://www.eliasproperty.com.au/sale/nsw/northern-suburbs/gladesville/residential/house/8627276>



**Ella Elias**  
02 9807 3688



FIRST FLOOR



GROUND FLOOR



Scale in metres. Indicative only. Dimensions are approximate. All information contained herein is gathered from sources we believe to be reliable. However we cannot guarantee its accuracy and interested persons should rely on their own enquiries



54 Pittwater Road, Gladesville

**ELLA ELIAS**  
PROPERTY GROUP