



10 Percy Street Gladesville NSW

6 4 2

Perfectly positioned on one of Gladesville's premier tree-lined streets, this expansive family residence presents an exceptional opportunity for both homeowners and developers. Set on a rare, level 917sqm parcel with an impressive 19.9m frontage and desirable north facing orientation, this property offers scope to redevelop into townhouses, build an oversized duplex (STCA), or simply enjoy the home as is—freshly updated and ready to move into.

Showcasing a generous and versatile layout over two levels, the home delivers outstanding proportions with 6 well-appointed bedrooms and 3 oversized living zones designed to accommodate multi-generational living or the

Type : House
Land Size : 917 sqm
View : <https://www.eliasproperty.com.au/sale/nsw/northern-suburbs/gladesville/residential/house/8419713>



Ella Elias
02 9807 3688

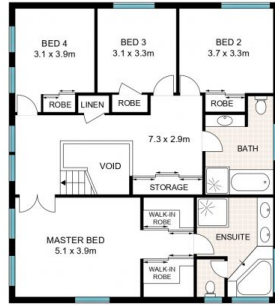


Luka Hatzis
0416 863 182

[For full version visit the website](https://www.eliasproperty.com.au)



GROUND FLOOR



FIRST FLOOR



Scale in metres. Indicative only. Dimensions are approximate. All information contained herein is gathered from sources we believe to be reliable. However we cannot guarantee its accuracy and interested persons should rely on their own enquiries

10 Percy Street, Gladesville

