

102/261 Morrison Road Ryde NSW

2 2 1

Set in the award-winning Putney Hill Estate, this stunning ground-level apartment is a rare gem, combining luxury with a vibrant lifestyle.

Offering generous proportions and sleek modern design, this private setting is perfect for those who crave indoor/outdoor living and entertaining.

- Master Suite, offers a private oasis with a walk-in robe and ensuite bathroom-complete with courtyard access
- Spacious double-sized 2nd bedroom with built-in robe and direct courtyard access
- Gourmet kitchen, with 88mm stone benches, Smeg appliances and gas cooking
- 2 luxurious bathrooms featuring floor-to-ceiling tiles, main

[For full version visit the website](https://www.eliasproperty.com.au/sale/nsw/north-ern-suburbs/ryde/residential/apartment/8315034)

Type : Apartment

Price : Contact Agent

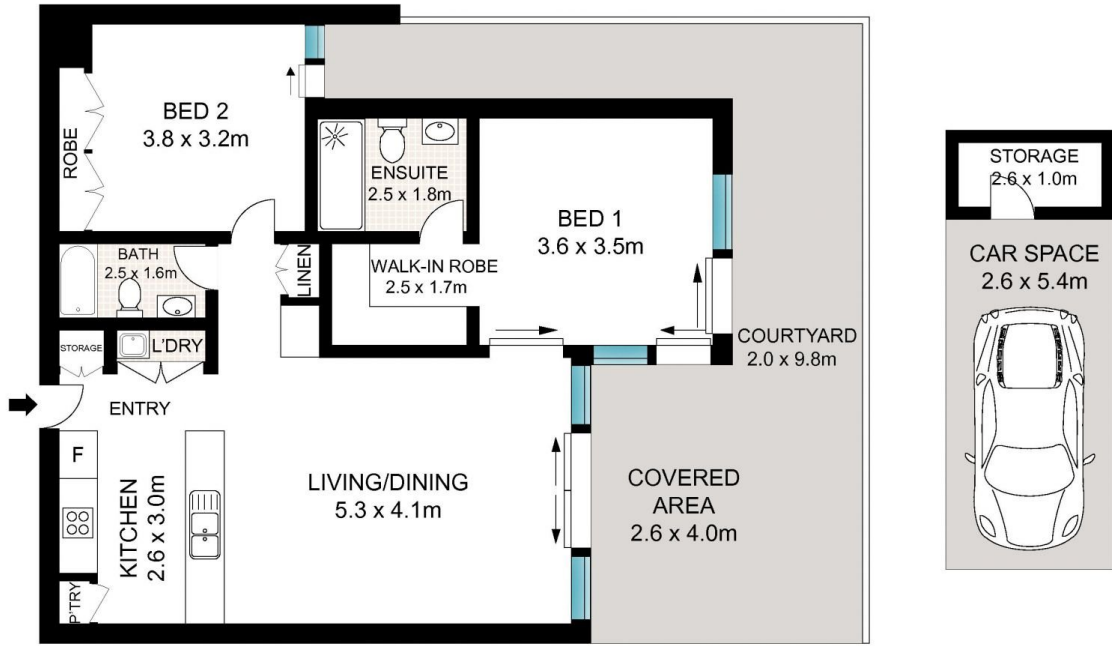
View : <https://www.eliasproperty.com.au/sale/nsw/north-ern-suburbs/ryde/residential/apartment/8315034>



Ella Elias
02 9807 3688



Christian Pascali
02 9807 3688



LEVEL ONE



INTERNAL : 73m²
EXTERNAL : 54m²



102/261 Morrison Road, Ryde



Scale in metres. Indicative only. Dimensions are approximate. All information contained herein is gathered from sources we believe to be reliable. However we cannot guarantee its accuracy and interested persons should rely on their own enquiries