



1066 Victoria Road West Ryde NSW

6 🚗

Ideal for any business owner occupier or investor, this is the perfect property to buy for great exposure and an opportunity to further enhance your investment.

Set in a premium location on the corner of Victoria Rd and Adelaide Street, this 2 storey shopfront attracts incredible traffic exposure with loads of potential to extend or redevelop (STCA).

With rear lane access and parking for up to 6 cars, this rare opportunity accommodates for a combination of commercial and residential use.

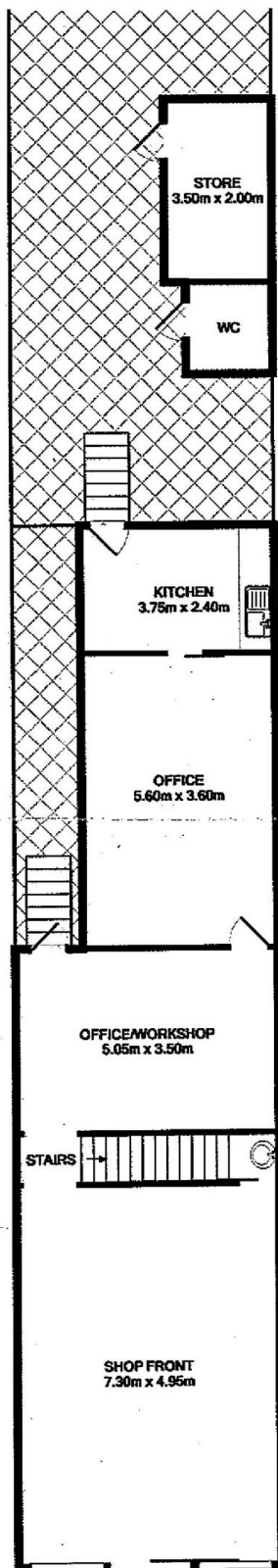
- ? Air conditioning
- ? Showroom
- ? Offices upstairs and downstairs

Price	: Price Guide \$1,500,000
Building Size	: 152 sqm
Land Size	: 256 sqm
View	: https://www.eliasproperty.com.au/sale/nsw/northern-suburbs/west-ryde/commercial/offices/7305320

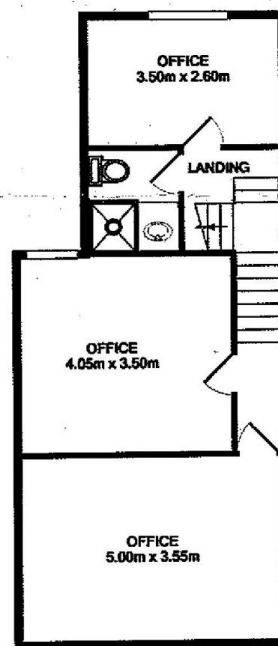


Ella Elias
02 9807 3688

1066 Victoria Road Ryde



GROUND FLOOR



1ST FLOOR

TOTAL APPROX. FLOOR AREA 1524 SQ.M.
Measurements are approximate. Not to Scale. For illustrative purposes only.